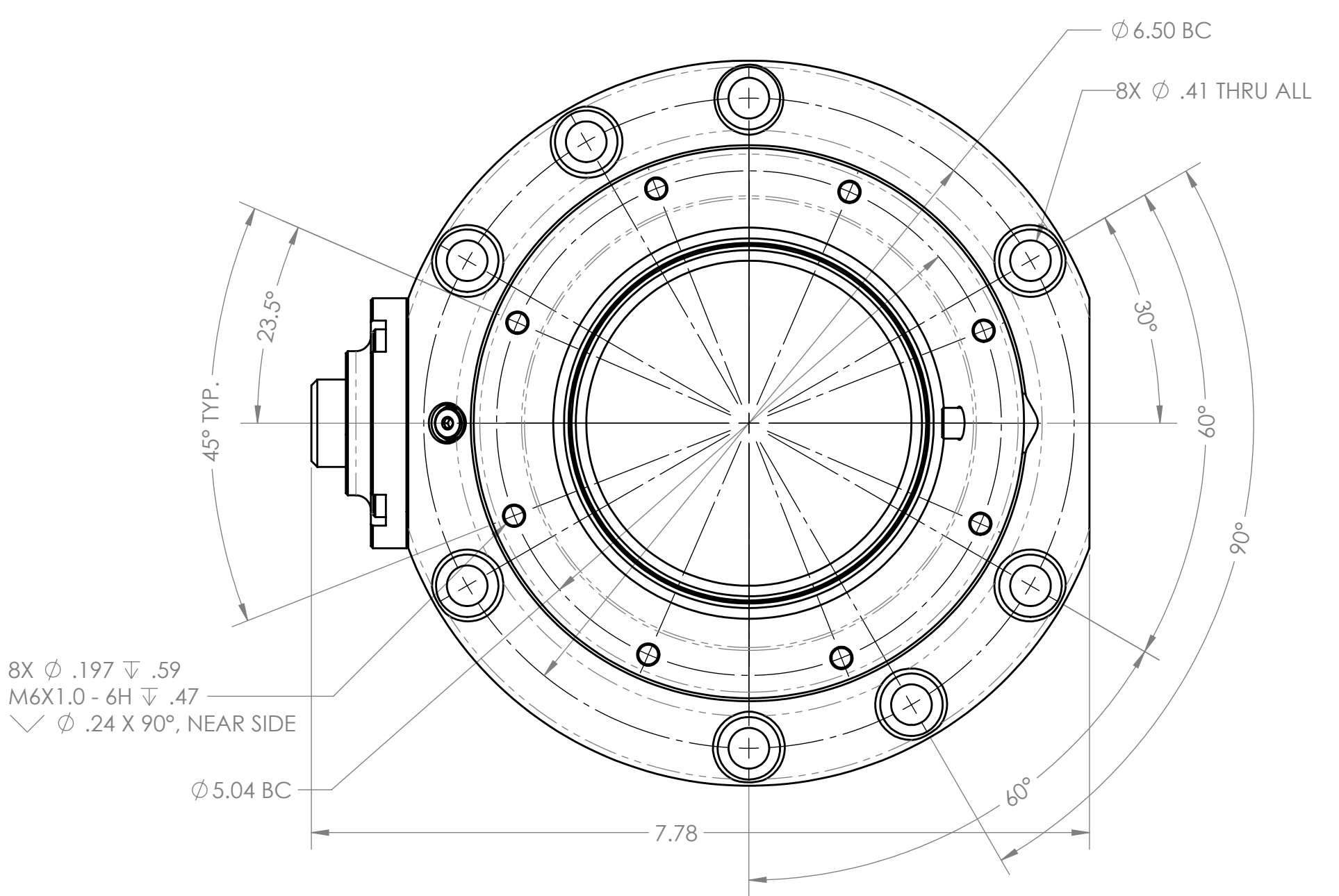
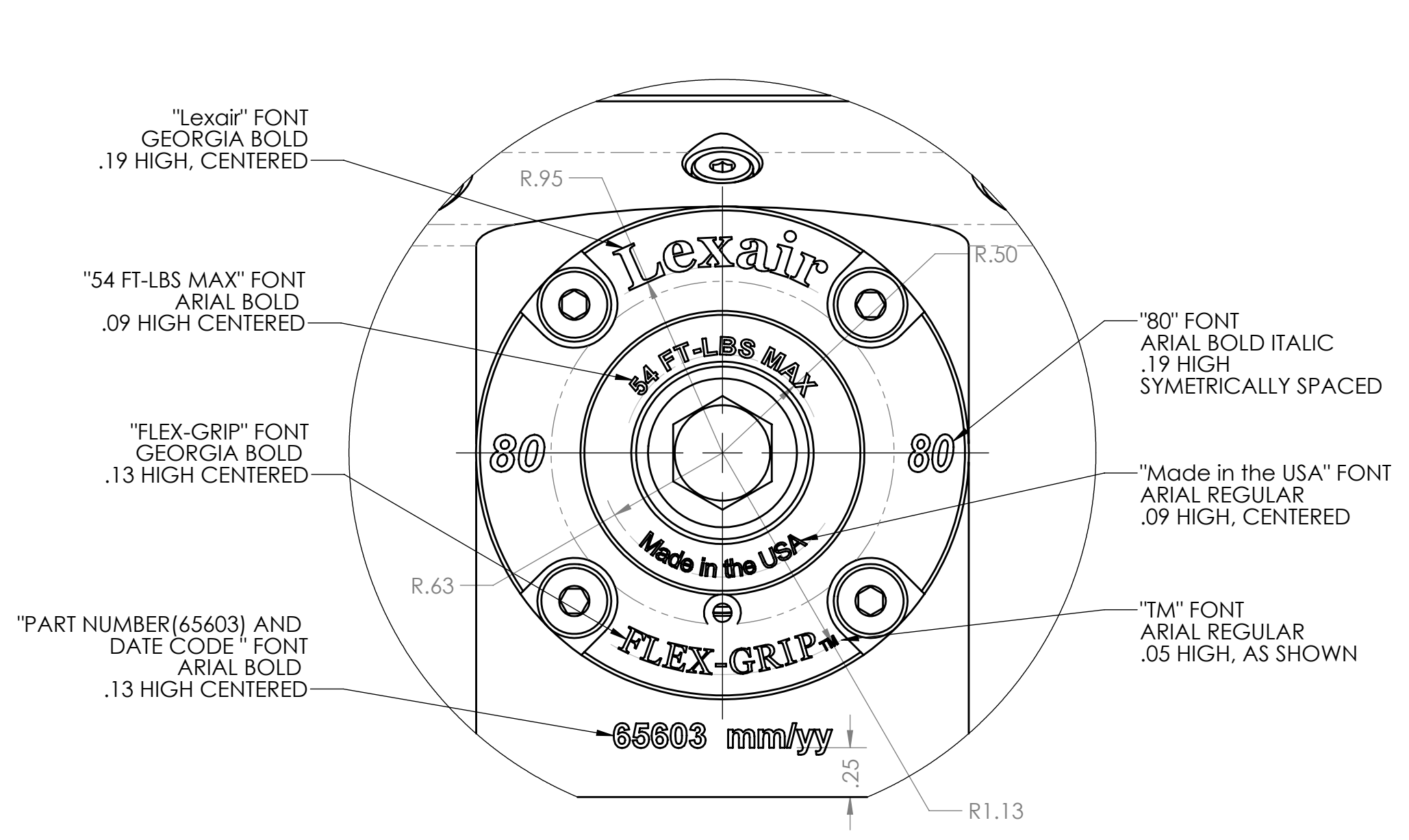


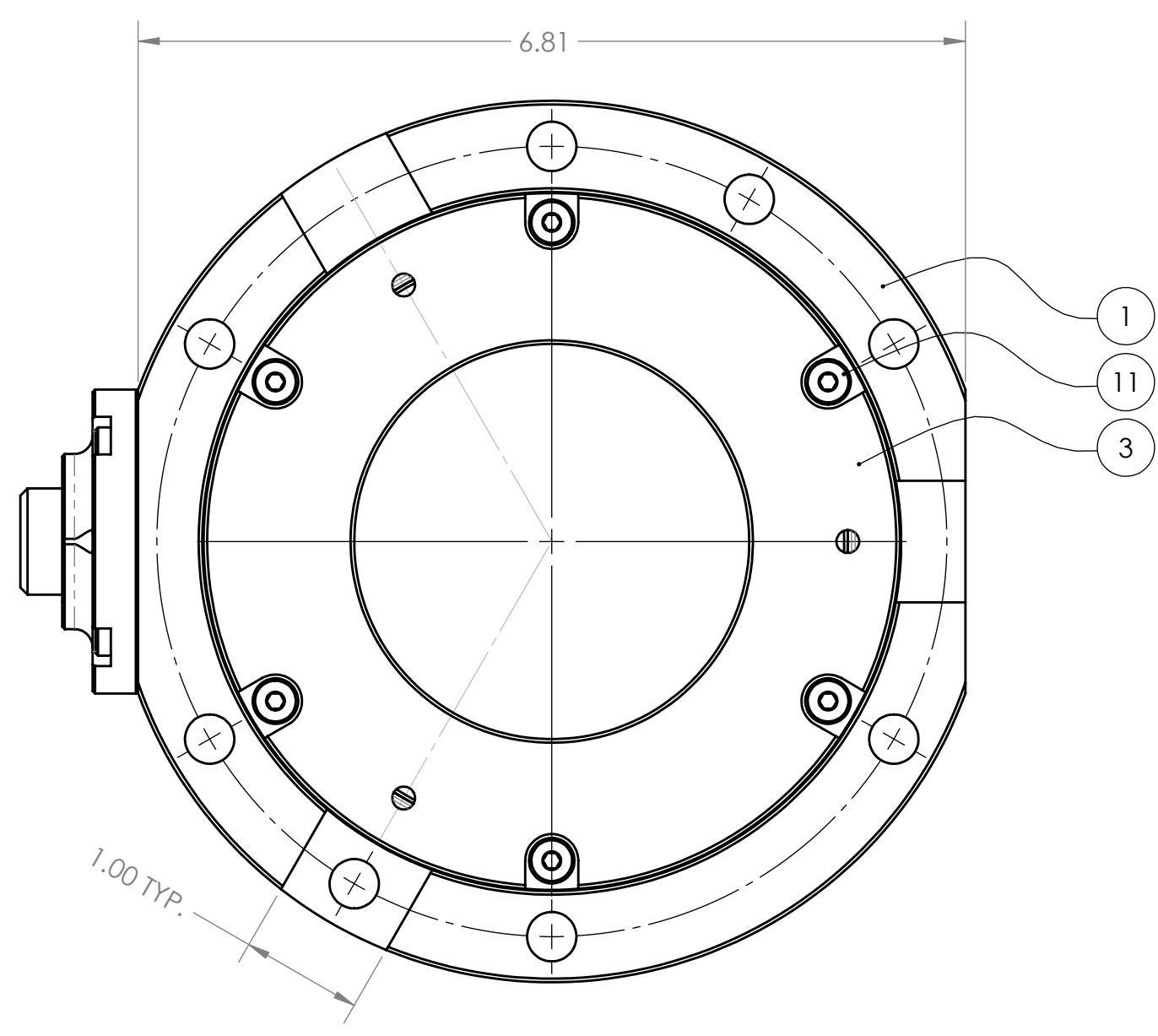
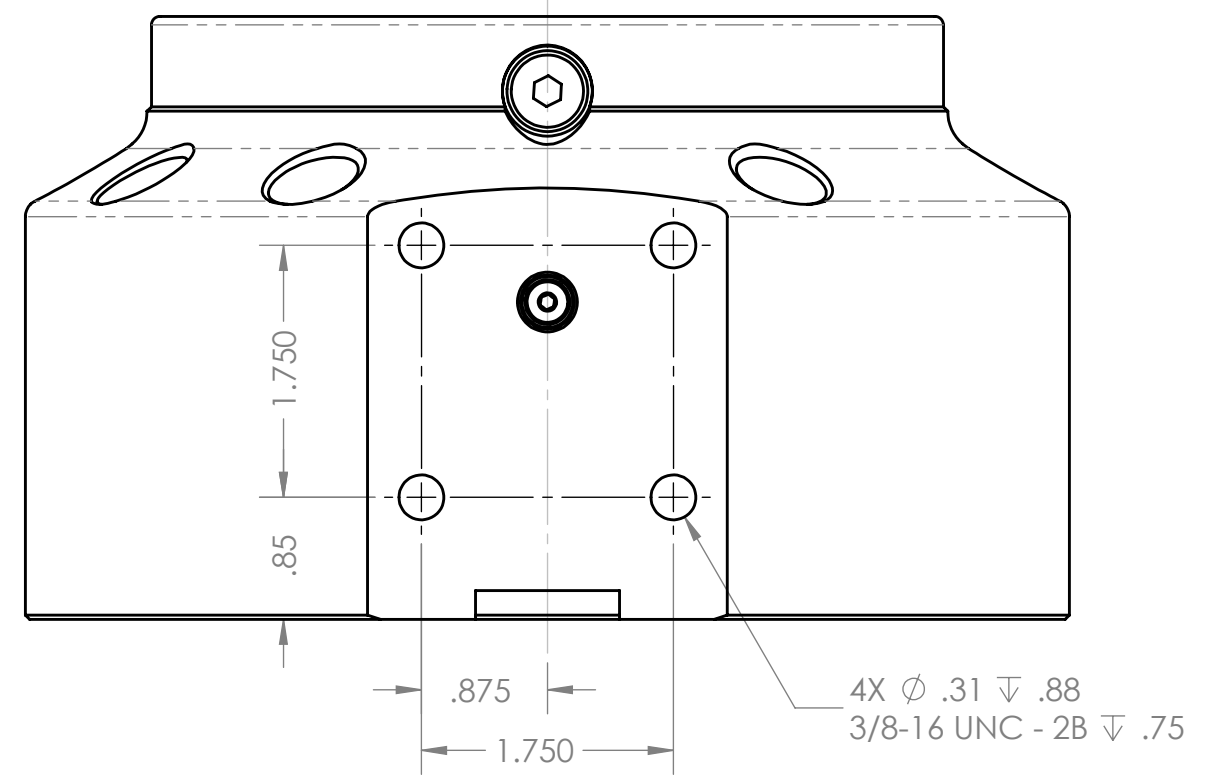
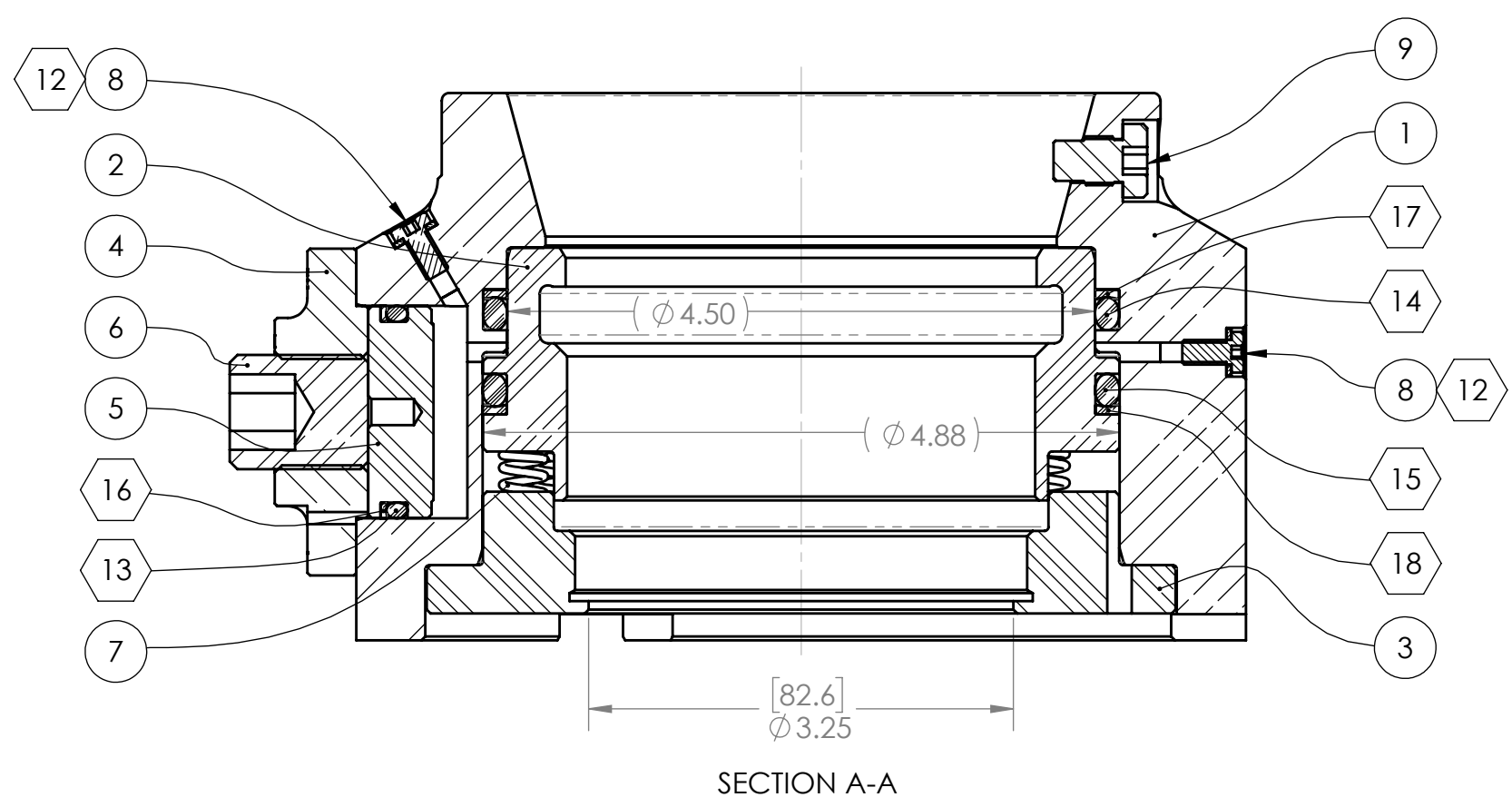
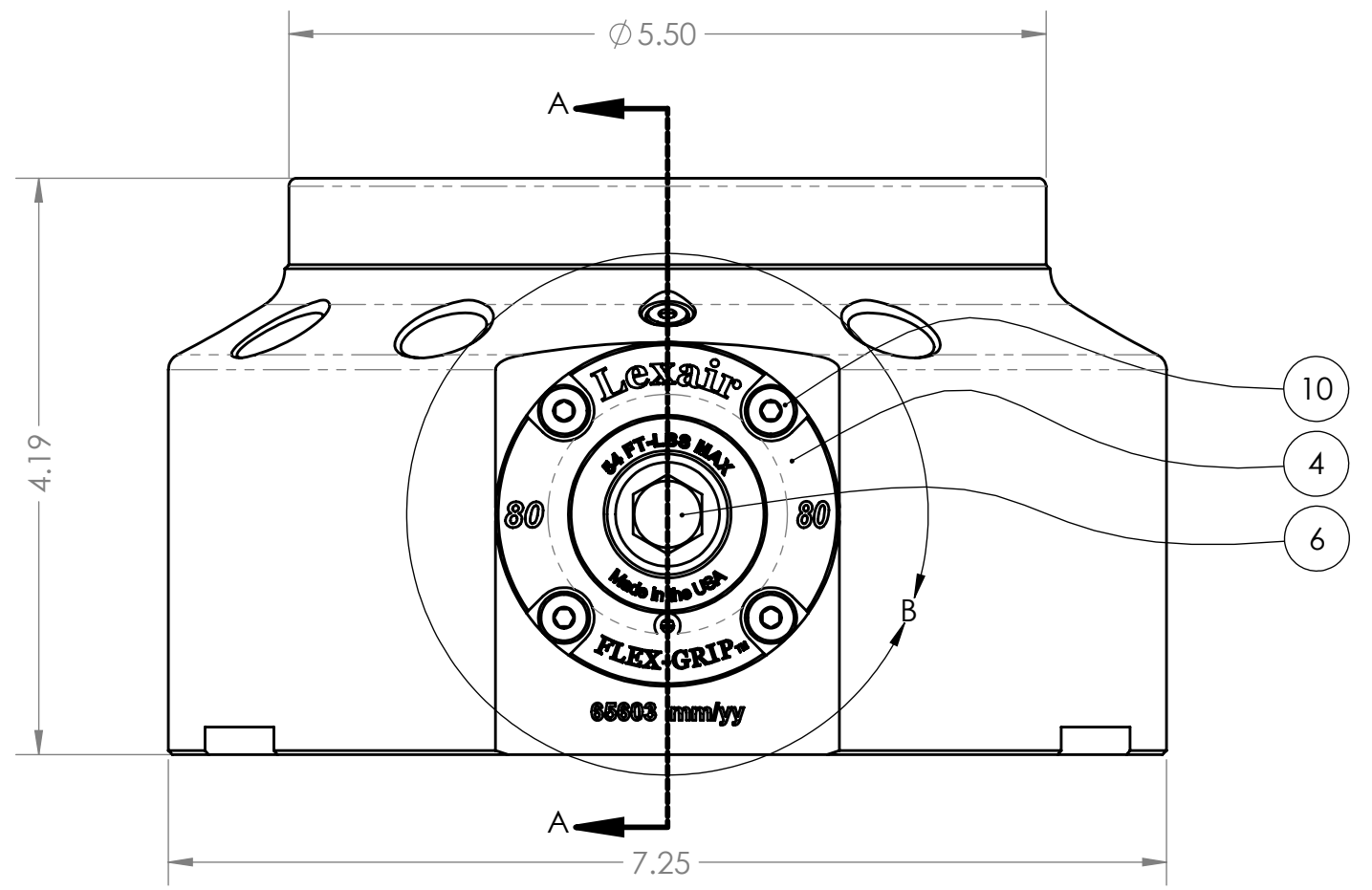
THIS DOCUMENT AND ITS CONTENTS ARE THE PROPERTY OF LEXAIR, INC. THEY ARE FURNISHED TO YOU ON THE FOLLOWING CONDITIONS: NO RIGHT OR LICENSE IN RESPECT OF THIS DOCUMENT OR ITS CONTENTS IS GIVEN OR WAIVED IN SUPPLYING THE DOCUMENT TO YOU. THIS DOCUMENT OR ITS CONTENTS ARE NOT TO BE USED OR TREATED IN ANY MANNER INCONSISTENT WITH THE RIGHTS OF LEXAIR, INC. OR TO ITS DETRIMENT AND ARE NOT TO BE COPIED, REPRODUCED, OR DISCLOSED, EXCEPT WITH ITS PRIOR WRITTEN CONSENT.

D 65603

ITEM NO.	PART NUMBER	DESCRIPTION	1 OPEN/QTY.
1	65-0350	BODY, CC, MAN HYD, 80mm	1
2	65-0351	PULLER, CC, FG, 80mm	1
3	65-0352	SPRING GUIDE, CC, FG, 80mm	1
4	65-0332	SCREW HOUSING, CC, MAN HYD	1
5	65-0333	PISTON, CC, MAN, HYD, FG	1
6	65-0334	PUMP SCREW, CC, MAN, HYD	1
7	08-0091	SPRING,COMP,MW,.378x.063x.85,K136	15
8	01-2483-0375	SCREW, SHC, LOW, #10-24x3/8, BLOX	2
9	65-0335	ANTI-ROT. SCREW,CC,MAN HYD	1
10	01-2484-0750	SCREW, SHC, LOW, 1/4-20, BLOX	4
11	01-2484-0500	SCREW, SLHC, 1/4-20x.50, BLOX	6
12	01-2485	WASHER, FLAT, COPPER, 3/16	2
13	04-25-220	O-RING, BUNA, 90 DURO, -220	1
14	04-25-349	O-RING, BUNA, 90 DURO, -349	1
15	04-25-349	O-RING, BUNA, 90 DURO, -349	1
16	04-31-220	BACK-UP RING, PARBAK, -220	1
17	04-31-349	BACK-UP RING, PARBAK, -349	1
18	04-31-349	BACK-UP RING, PARBAK, -349	1



DETAIL B SCALE 6 : 4



ZONE	REV.	DESCRIPTION	DATE	APPROVED
	A	PRODUCTION FIRST ISSUE, (WAS PJ16025-100)	11/3/2017	TPO
REVISIONS				
Tolerances Unless Otherwise Specified		MATERIAL SPEC:	PC: 65603	
TYPE	FINISHED	AS CAST	MAKE FROM:	
DECIMAL .00	+ .015	+ .020	MODEL: G:\engr\CAD3D\65603	
DECIMAL .000	+ .005	+ .010	FILE:	
FRACTIONAL	+ 1/64	+ 1/32	DRAW FILE:	
ANGLES	+ 1°	+ 1°		
SURFACE FINISH (µ in)	100-175	200-500		
DIMENSIONS ARE IN INCHES				
TITLE: COLLET CLSR, FLEX-C, 80mm			D 65603	
DRAWN: TPO			CHECKED: SM	ENG APPR: TPO
DATE: 9/29/2017			DATE: 11/7/2017	DATE: 11/8/2017
SHEET 1 OF 1			SCALE: 3:4	
WEIGHT: 26.498 LBS				

